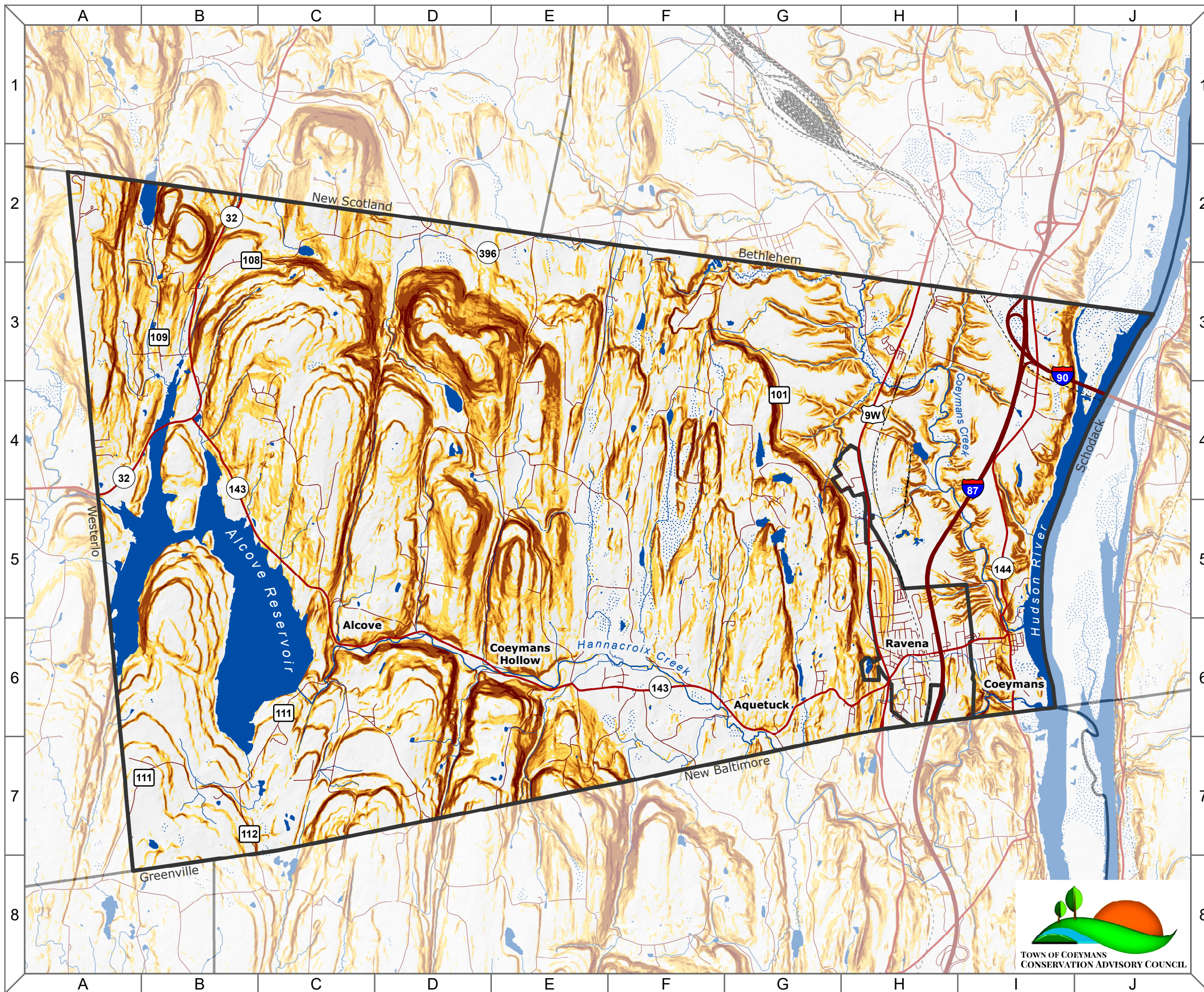


Town of Coeymans Natural Resources Inventory

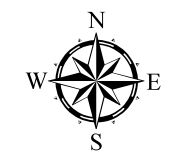
5. Steep Slopes



Map Legend

Hydrology	Percent Slope
Open Water	< 10
Wetland	10 - 14.9
River/Stream	15 - 19.9
Interstate	20 - 24.9
State/US Highway	25 - 49.9
Local Street	> 50
Railroad	
Municipality	

Scale: 1:60,000



Data Sources: *Elevation and Derived Slope:* NYS DEC and U.S. Geological Survey (date unknown). | *Roadways:* ESRI North American Detailed Streets (2010). | *Railroads:* NYS DOT (May 2013). | *Towns:* NYS GIS Program Office (January 2017). | *Rivers/Streams:* National Hydrography Dataset: NYS DEC and US Geological Survey (March 2017). | *Wetlands:* US Fish and Wildlife Service and NYS DEC (September 2012). **Note:** This map is intended for general planning and education purposes and is not a substitute for site-level surveys. It relies upon public data sources that may contain errors or omissions. Town of Coeymans Natural Resources Inventory maps were completed with technical assistance from Cornell University, with funding from the NYS Environmental Protection Fund through the NYS DEC Hudson River Estuary Program. <http://hudson.dnr.cals.cornell.edu>
Map by Andrew Varuzzo, 2017.

